



**India Meteorological Department  
(Ministry of Earth Sciences)**

**NATIONAL BULLETIN NO. 10 (AS/02/2024)**

**TIME OF ISSUE: 1530 HOURS IST**

**DATED: 15.10.2024**

**FROM: INDIA METEOROLOGICAL DEPARTMENT (FAX NO. 24643965/24699216/24623220)**

**TO: CONTROL ROOM, NDM, MINISTRY OF HOME AFFAIRS (FAX.NO. 23093750)  
CONTROL ROOM NDMA (FAX.NO. 26701729)  
CABINET SECRETARIAT (FAX.NO.23012284, 23018638)  
PS TO HON'BLE MINISTER FOR S & T AND EARTH SCIENCES (FAX NO.23316745)  
SECRETARY, MOES (FAX NO. 24629777)  
H.Q. (INTEGRATED DEFENCE STAFF AND CDS) (FAX NO. 23005137/23005147)  
DIRECTOR GENERAL, DOORDARSHAN (23385843)  
DIRECTOR GENERAL, AIR (23421105, 23421219)  
PIB MOES (FAX NO. 23389042)  
UNI (FAX NO. 23355841)  
D.G. NATIONAL DISASTER RESPONSE FORCE (NDRF) (FAX NO. 26105912, 2436 3260)  
DIRECTOR, PUNCTUALITY, INDIAN RAILWAYS (FAX NO. 23388503)  
CHIEF SECRETARY, MAHARASHTRA (FAX NO. 022- 22028594)  
CHIEF SECRETARY, GUJARAT (FAX NO. 079-23250305)  
CHIEF SECRETARY, DAMAN & DIU (FAX NO. 0260-2230775)  
CHIEF SECRETARY, DADRA & NAGAR HAVELI (FAX NO. 0260-2645466)  
CHIEF SECRETARY, GOA (FAX NO. 0832-2415201)  
CHIEF SECRETARY, KARNATAKA (FAX NO. 080-22258913)  
CHIEF SECRETARY, KERALA (FAX NO. 0471-2327176)  
CHIEF SECRETARY, LAKSHADWEEP (FAX NO. 04896-268124)  
CHIEF SECRETARY, TAMIL NADU (FAX NO. 044-25672304)  
CHIEF SECRETARY, ANDHRA PRADESH (FAX NO. 0863-2441029)  
CHIEF SECRETARY, PUDUCHERRY (FAX NO. 0413-2334145)**

**Sub: (A) Well Marked Low Pressure Area over southwest and adjoining southeast Bay of Bengal and  
(B) Depression over westcentral Arabian Sea off Oman coast**

**(A) Well Marked Low Pressure Area over southwest and adjoining southeast Bay of Bengal**

The well marked low pressure area over the central part of south Bay of Bengal moved west-northwestwards and lay centered over southwest and adjoining southeast Bay of Bengal at 1130 hours IST of today, the 15th October 2024.

It is likely to move west-northwestwards and intensify into a depression over southwest Bay of Bengal during next 12 hours. It is likely to continue to move west-northwestwards thereafter and reach near north Tamil Nadu, Puducherry and adjoining south Andhra Pradesh coasts by 17<sup>th</sup> October early morning as a depression.

**Warnings:**

**(i) Rainfall Warning:**

**Tamil Nadu & Puducherry:** Light to moderate rainfall over most places with heavy to very heavy rainfall at isolated places over Tamil Nadu & Puducherry and extremely heavy rainfall at isolated places over north Tamil Nadu on 15<sup>th</sup> October.

Light to moderate rainfall over most places with heavy to very heavy rainfall at a few places with extremely heavy rainfall at isolated places is very likely over north Tamil Nadu & Puducherry on 16<sup>th</sup> October and isolated heavy to very heavy rainfall over north interior Tamil Nadu on 17<sup>th</sup> October.

Light to moderate rainfall over most places with heavy rainfall at isolated places is very likely over south Tamil Nadu during 15<sup>th</sup> to 17<sup>th</sup> October.

**South Andhra Pradesh & Rayalaseema** Light to moderate rainfall over most places with heavy to very heavy rainfall at isolated places is very likely on 15<sup>th</sup>; heavy to very heavy rainfall at a few places with extremely heavy rainfall at isolated places is likely on 16<sup>th</sup> October and heavy rainfall at isolated places is likely on 17<sup>th</sup> October.

**Kerala & south Interior Karnataka:** Light to moderate rainfall over most places with heavy to very heavy rainfall at isolated places is likely over Kerala and south Interior Karnataka during 15<sup>th</sup> to 17<sup>th</sup> October.

**(ii) Wind Warning:**

Squally weather with wind speed reaching 35-45 kmph gusting 55 kmph is likely to prevail over southeast and adjoining southwest & central Bay of Bengal till evening of today, the 15<sup>th</sup> October. It is likely to increase thereafter becoming squally wind speed reaching 40-50 kmph gusting to 60 kmph over southwest and adjoining westcentral Bay of Bengal and along & off Tamil Nadu, Puducherry and south Andhra Pradesh coasts till 17<sup>th</sup> October and decrease gradually thereafter.

**(iii) Sea Condition:**

Moderate to Rough Sea condition is likely to prevail over southeast and adjoining southwest & central Bay of Bengal till evening of today, the 15<sup>th</sup> October. It is likely to become Rough to very Rough Sea condition thereafter over southwest & adjoining westcentral Bay of Bengal and along & off Tamil Nadu, Puducherry and south Andhra Pradesh coasts till 17<sup>th</sup> October and improve gradually thereafter.

**(iv) Fishermen Warning:**

Fishermen are advised not to venture into

- Southeast and adjoining central Bay of Bengal on 15<sup>th</sup> October.
- Southwest and adjoining westcentral Bay of Bengal from 15<sup>th</sup> to 17<sup>th</sup> October.
- Fishermen out at sea are advised to return to coasts.

**(v) Flash Flood Guidance:**

**24 hours Outlook for the Flash Flood Risk (FFR) till 0530 IST of 16-10-2024 :**

Low to Moderate flash flood risk likely over few watersheds of following Met Sub-divisions during next 24 hours.

**Coastal Andhra Pradesh** – Nellore and Prakasham district

**Rayalaseema** – Kadapa and Chittor districts

**Tamil Nadu**– Thiruvallur district.

Surface runoff/ Inundation may occur at some fully saturated soil & low-lying areas over area of concern as shown in map due to expected rainfall occurrence in next 24 hours.

**❖ Impact Expected [Tamil Nadu (including Chennai) and Andhra Pradesh due to heavy rainfall]**

- Localized Flooding of roads, water logging in low lying areas and closure of underpasses mainly in urban areas of the above region.
- Occasional reduction in visibility due to heavy rainfall.
- Disruption of traffic in major cities and roadways due to water logging in roads and poor visibility due to heavy rain leading to increased travel time and incidents
- Likely disruption of marine and inland water transportation like small boats and trawlers.
- Minor damage to kutcha roads.
- Possibilities of damage to vulnerable structure.
- Localized Landslides/Mudslides/landslips/mud slips/land sinks/mud sinks.
- Damage to horticulture and standing crops in some areas due to inundation and wind.
- It may lead to riverine flooding in some river catchments (for riverine flooding please visit Webpage

of Central Water Commission)

❖ **Action Suggested [Tamil Nadu and Andhra Pradesh due to heavy rainfall]**

- Fishermen are advised not to venture into
  - Southeast and adjoining central Bay of Bengal on 15th October.
  - Southwest and adjoining westcentral Bay of Bengal from 15th to 17th October.
  - Fishermen out at sea are advised to return to coasts.
- Judicious regulation of surface transports including railways and roadways and onshore/offshore activities.
- Check for traffic congestion on your route before leaving for your destination.
- Follow any traffic advisories that are issued in this regard.
- Avoid going to areas that face the water logging problems often.
- Avoid staying in vulnerable structure.

**Agromet advisories for Heavy Rainfall**

- Provide mechanical support to horticultural crops & staking to vegetables.
- Keep the harvested produce at safer place.

**(B) Depression over Westcentral Arabian Sea off Oman coast**

The Depression over westcentral Arabian Sea off Oman coast moved northwestwards with a speed of 18 kmph during past 6 hours, and lay centred at 1130 hours IST of today, the 15th October, 2024 over the same region near latitude 17.5°N and longitude 59.8°E, about 320 km southeast of Duqm (Oman), 360 km south-southeast of Masirah (Oman), 610 km east of Salalah (Oman) and 840 km east-northeast of Al Ghaidah (Yemen).

It is likely to move nearly north-westwards towards Oman coast and weaken gradually into a well-marked low pressure area during next 12 hours.

**Warnings:**

**(i) Wind warning:**

- Squally wind speed reaching 40-50 kmph gusting to 60 kmph is likely to prevail over westcentral Arabian Sea till 15<sup>th</sup> October and decrease gradually thereafter.

**(ii) Sea condition:**

- Rough to very rough sea condition is likely to prevail only over westcentral Arabian Sea till 15<sup>th</sup> October and improve gradually thereafter.

**(iii) Fishermen warning:**

- Fishermen are advised not venture into
- Westcentral Arabian Sea till morning of 16<sup>th</sup> October.

❖ **Impact Expected over Sea area**

- Reduction of visibility over sea area due to sea spray induced by strong wind and heavy rainfall.
- Impact expected for boats, motor boats, smaller ships and trawler used for fishing and other purposes.

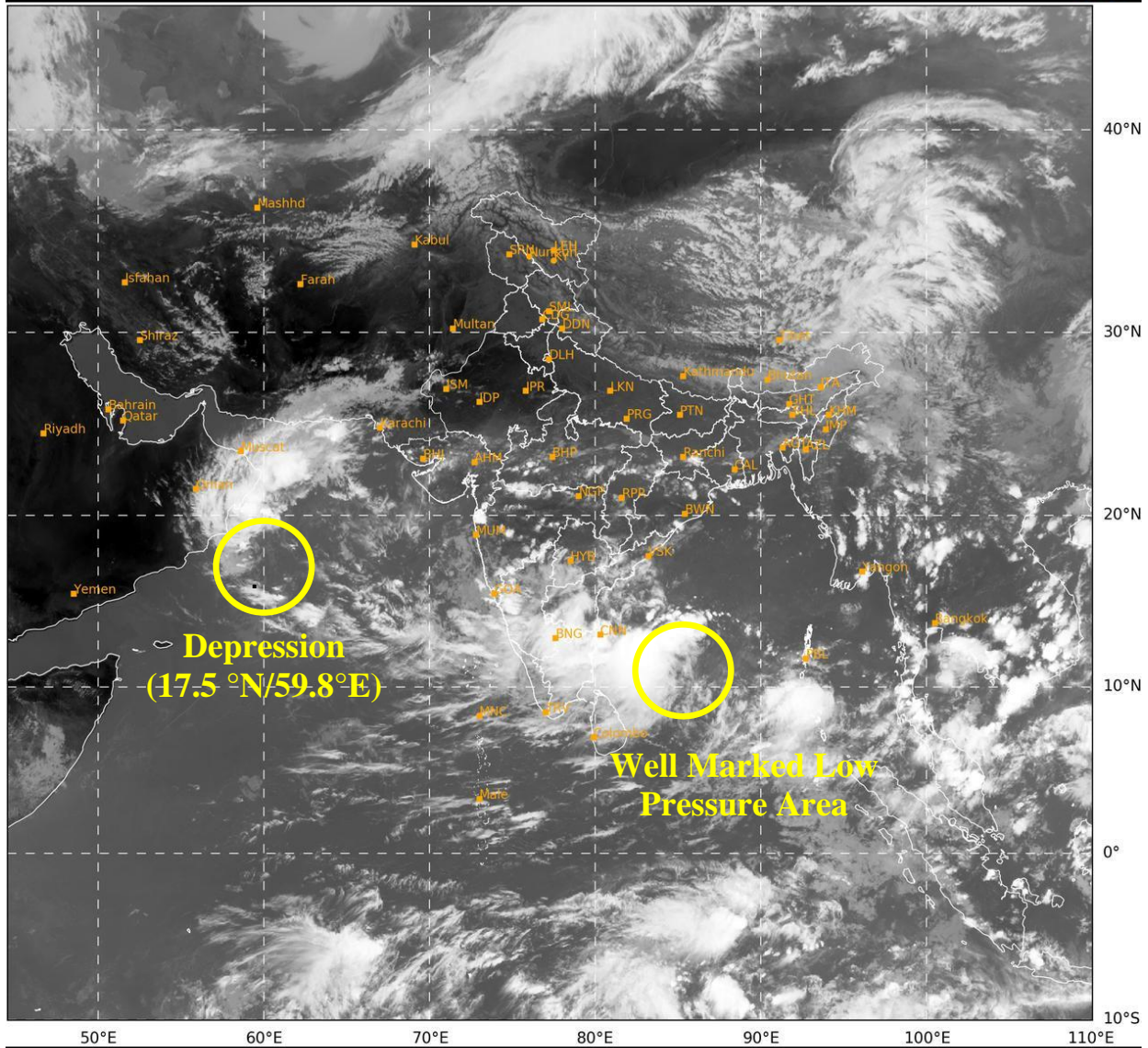
❖ **Action Suggested**

- Fishermen are advised not venture into
- Westcentral Arabian Sea till morning of 16<sup>th</sup> October.

**Next bulletin will be issued at 1430 hours IST of today, the 15<sup>th</sup> October, 2024.**

**(Dr. D. R. Pattanaik)**  
**Scientist-F, RSMC & IMD, New Delhi**

*Copy to: ACWC Kolkata/ACWC Mumbai/ACWC Chennai/CWC Ahmedabad/CWC Bhubaneswar/CWC Vishakhapatnam CWC, Thiruvananthapuram/ MC, Goa*



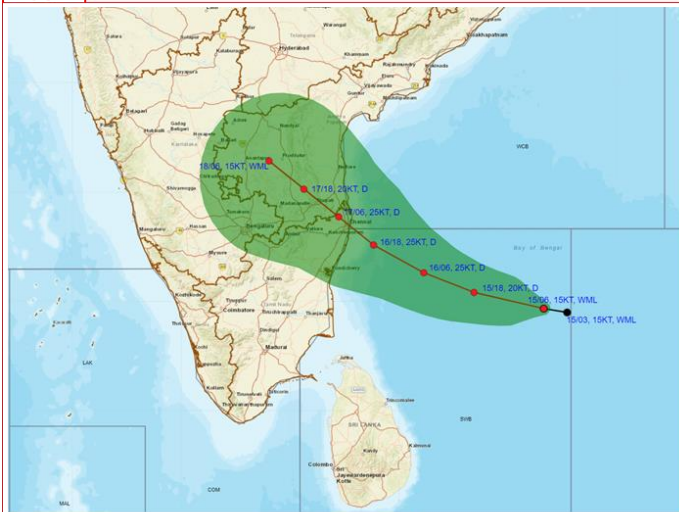
246

943

IMD, DELHI



**WELL MARKED LOW PRESSURE AREA OVER SOUTHWEST ADJOINING SOUTHEAST BAY OF BENGAL BASED ON 0600 UTC (1130 Hrs. IST) OF 15<sup>th</sup> OCTOBER, 2024**

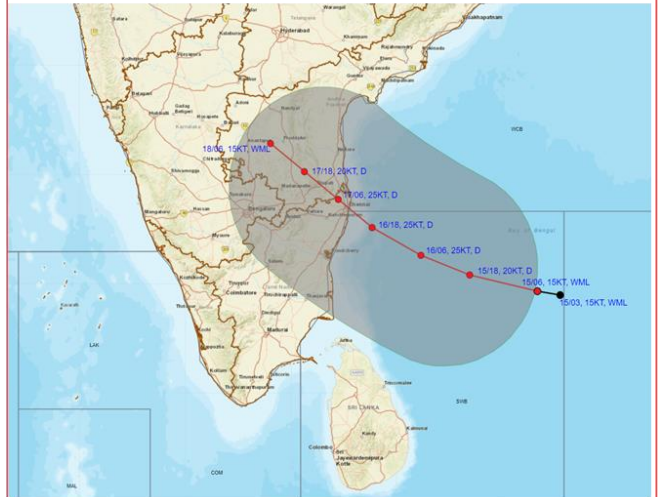


DATE/TIME IN UTC  
 IST-UTC + 0530  
 L: LOW PRESSURE AREA  
 WML: WELL MARKED LOW PRESSURE AREA  
 D: DEPRESSION (17-27 KT)  
 DD: DEEP DEPRESSION (28-33 KT)  
 CS: CYCLONIC STORM (34-47 KT)  
 SCS: SEVERE CYCLONIC STORM (48-63KT)  
 VSCS: VERY SEVERE CYCLONIC STORM (64-89 KT)  
 ESCS: EXTREMELY SEVERE CYCLONIC STORM (90-119 KT)  
 SuCS: SUPER CYCLONIC STORM (≥ 120 KT)

● LESS THAN 34 KT  
 ○ 34-47 KT  
 ○ ≥ 48 KT  
 — OBSERVED TRACK  
 — FORECAST TRACK  
 ● CONE OF UNCERTAINTY



**OBSERVED AND FORECAST TRACK ALONGWITH QUADRANT WIND DISTRIBUTION OF WELL MARKED LOW PRESSURE AREA OVER SOUTHWEST ADJOINING SOUTHEAST BAY OF BENGAL BASED ON 0600 UTC (1130 Hrs. IST) OF 15<sup>th</sup> OCTOBER, 2024**

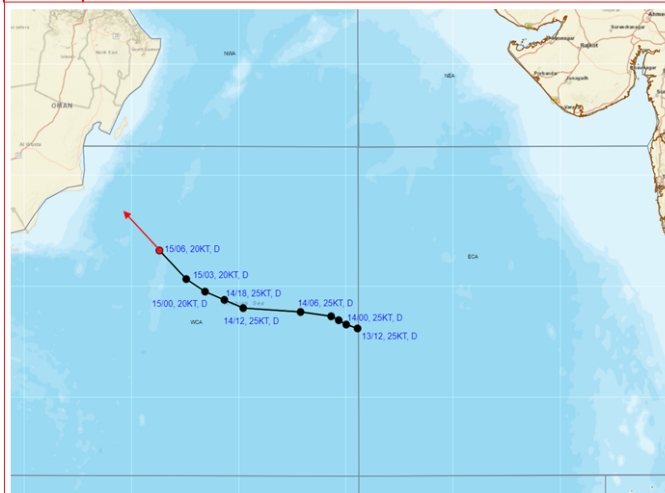


DATE/TIME IN UTC  
 IST-UTC + 0530  
 L: LOW PRESSURE AREA  
 WML: WELL MARKED LOW PRESSURE AREA  
 D: DEPRESSION (17-27 KT)  
 DD: DEEP DEPRESSION (28-33 KT)  
 CS: CYCLONIC STORM (34-47 KT)  
 SCS: SEVERE CYCLONIC STORM (48-63KT)

● LESS THAN 34 KT  
 ○ 34-47 KT  
 ○ ≥ 48 KT  
 — OBSERVED TRACK  
 — FORECAST TRACK  
 ● CONE OF UNCERTAINTY  
 ■ AREA OF MAXIMUM SUSTAINED WIND SPEED:  
 20-30 KT (35-55 KMPH)

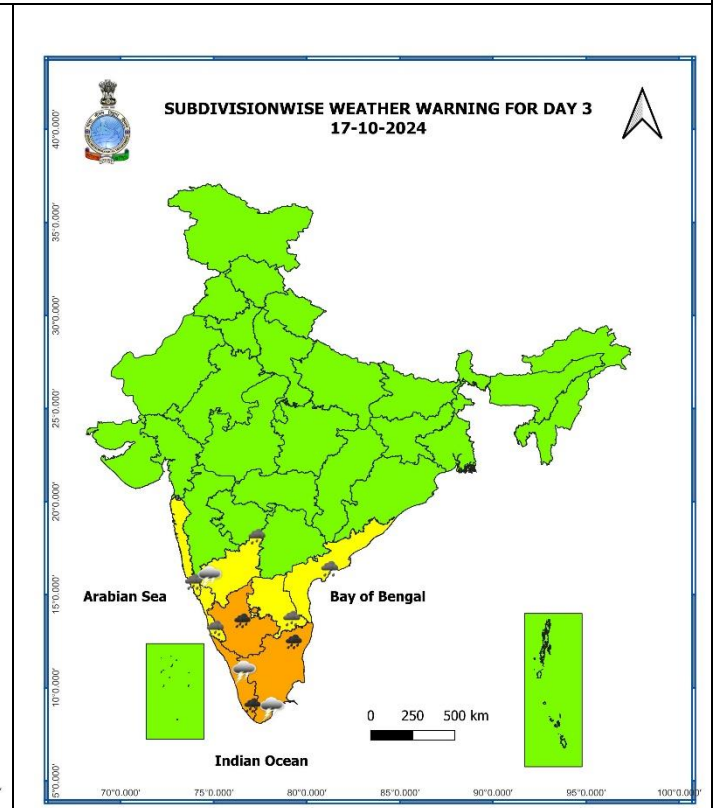
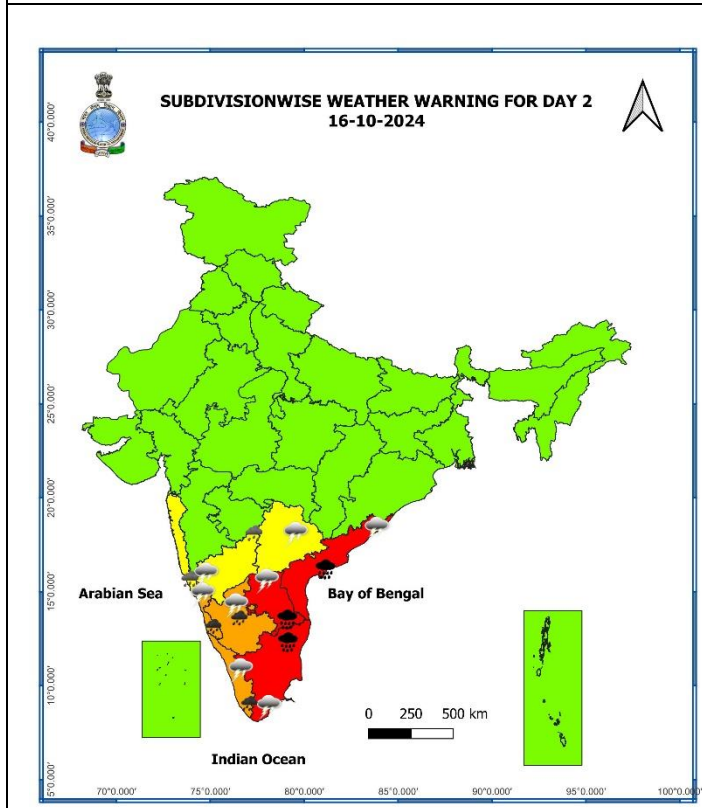
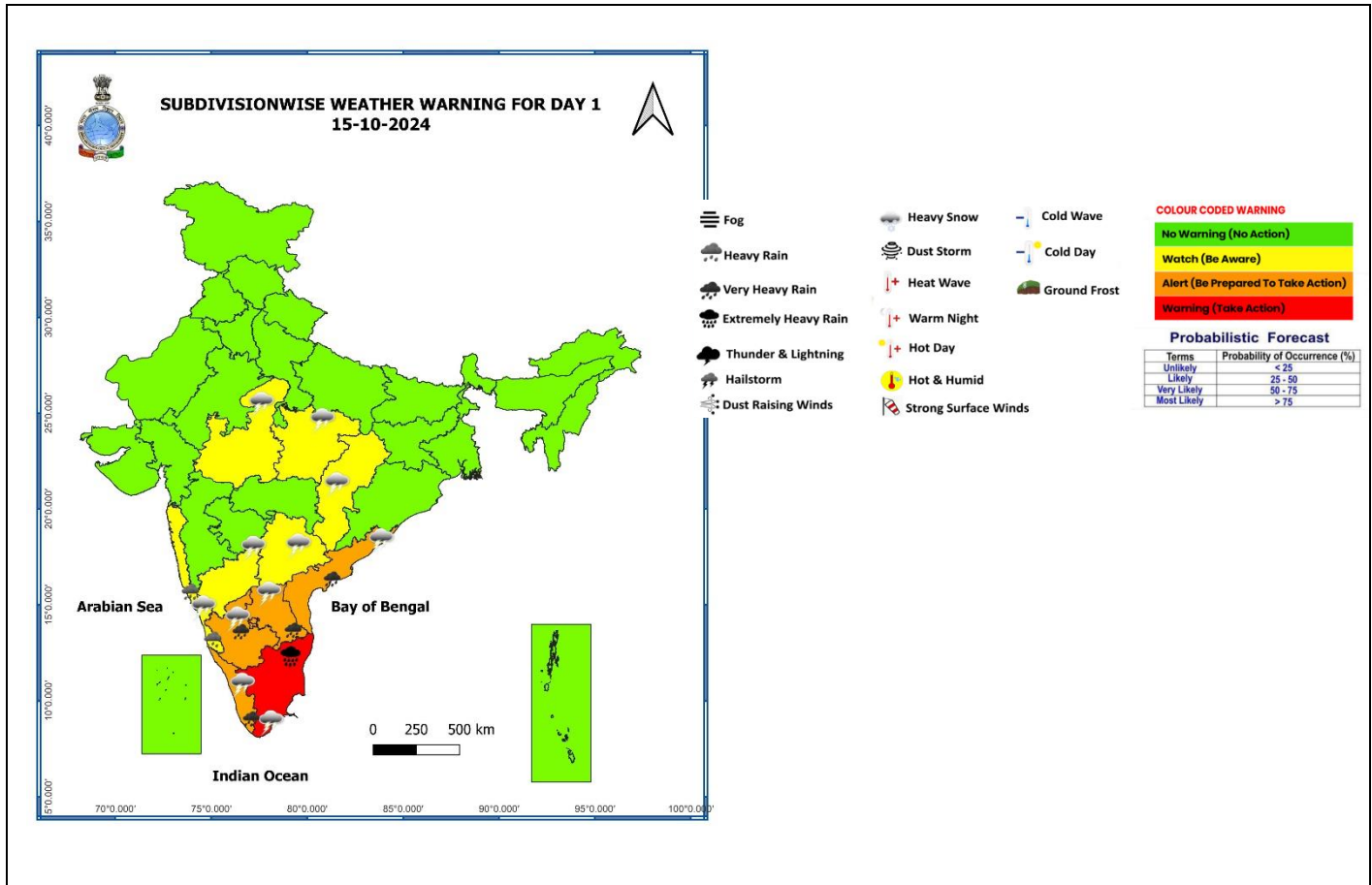


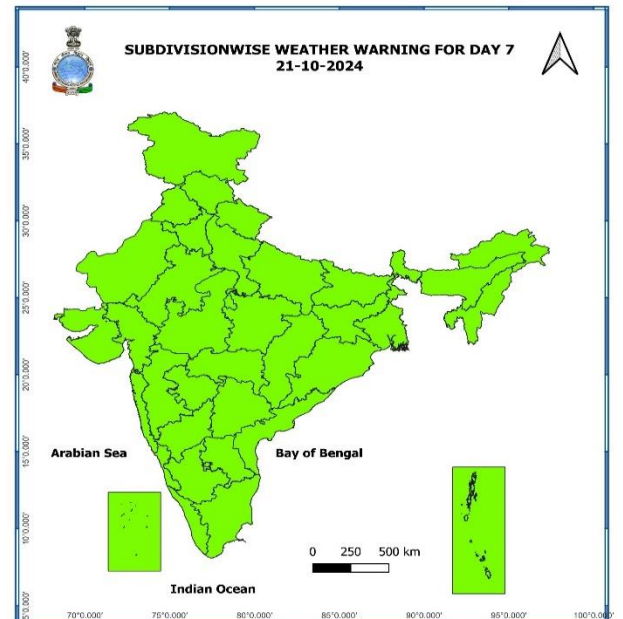
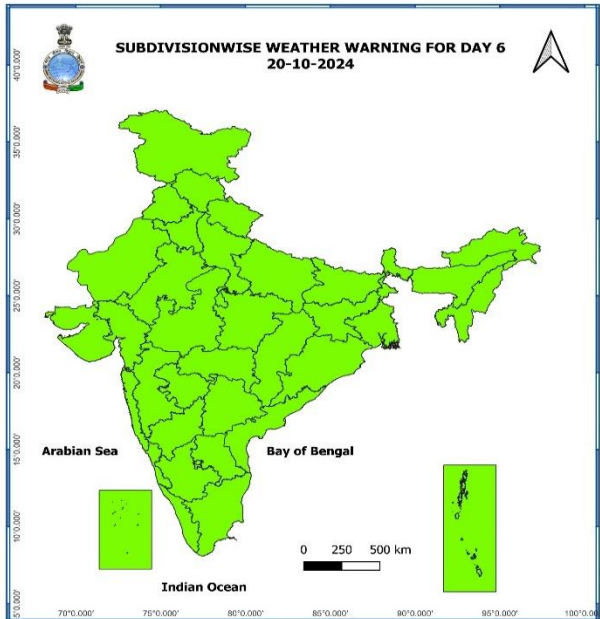
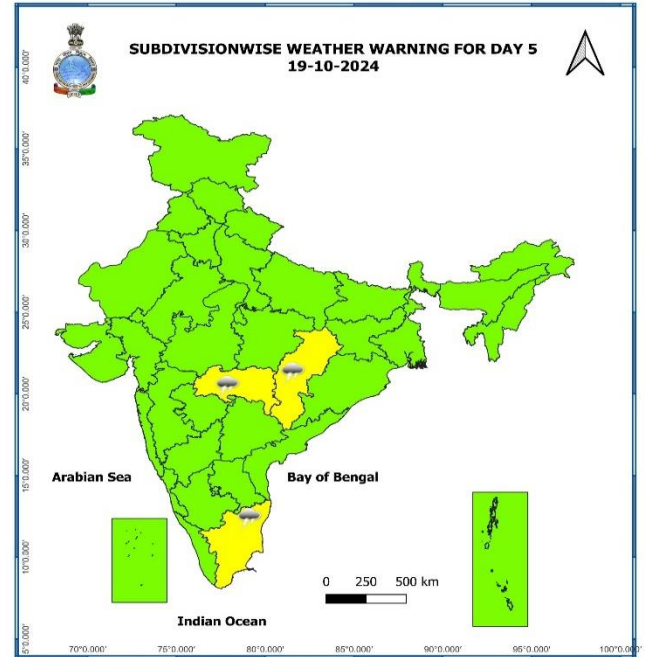
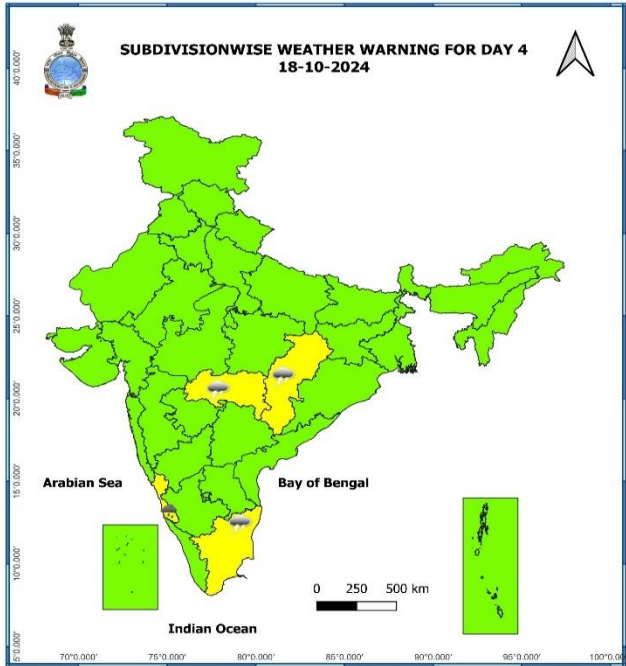
**OBSERVED AND FORECAST TRACK OF DEPRESSION OVER WESTCENTRAL ARABIAN SEA BASED ON 0600 UTC (1130 Hrs. IST) OF 15<sup>th</sup> OCTOBER, 2024**



DATE/TIME IN UTC  
 IST-UTC + 0530  
 L: LOW PRESSURE AREA  
 WML: WELL MARKED LOW PRESSURE AREA  
 D: DEPRESSION (17-27 KT)  
 DD: DEEP DEPRESSION (28-33 KT)  
 CS: CYCLONIC STORM (34-47 KT)  
 SCS: SEVERE CYCLONIC STORM (48-63KT)  
 VSCS: VERY SEVERE CYCLONIC STORM (64-89 KT)  
 ESCS: EXTREMELY SEVERE CYCLONIC STORM (90-119 KT)  
 SuCS: SUPER CYCLONIC STORM (≥ 120 KT)

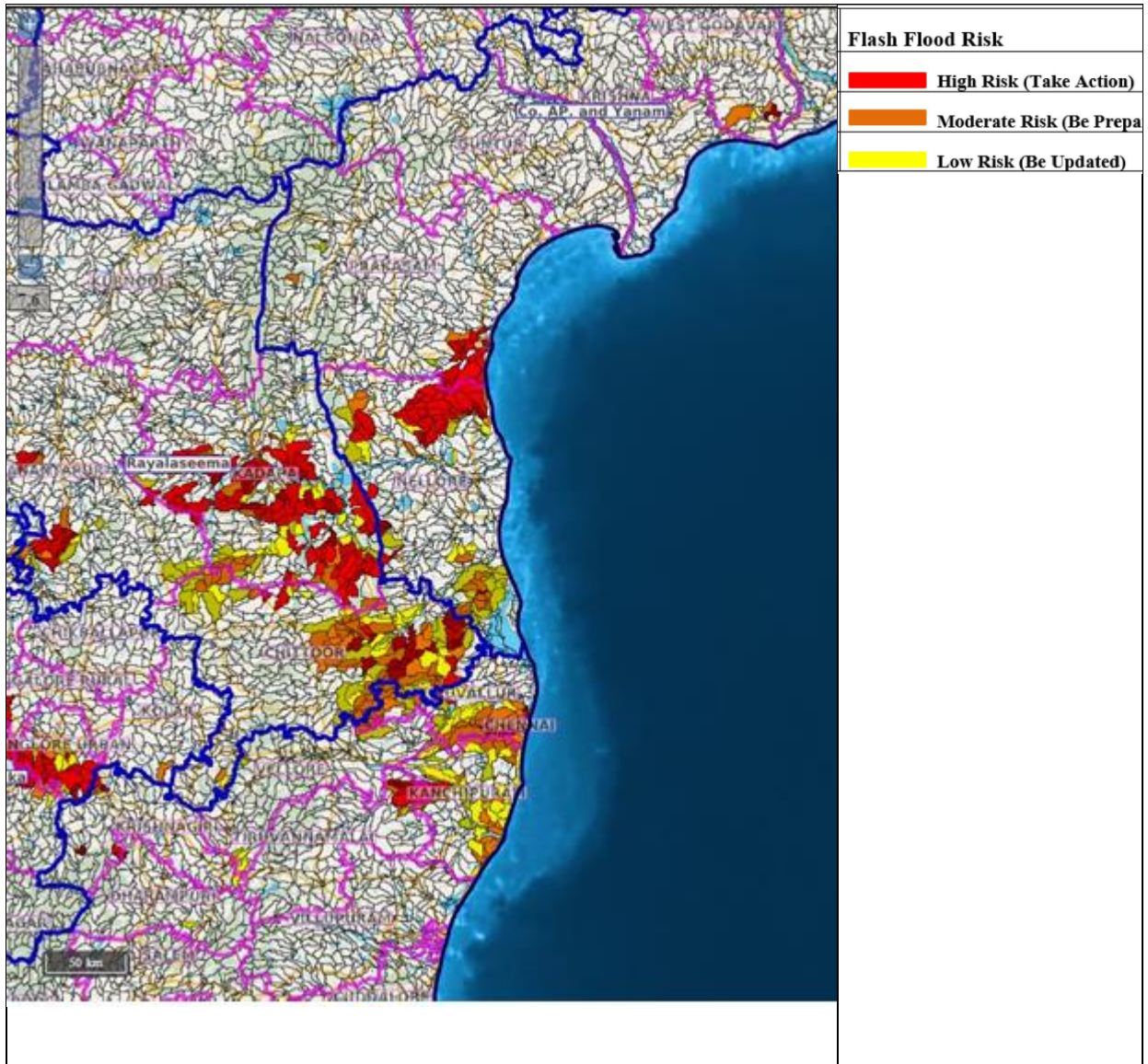
● LESS THAN 34 KT  
 ○ 34-47 KT  
 ○ ≥ 48 KT  
 — OBSERVED TRACK  
 — FORECAST TRACK  
 ● CONE OF UNCERTAINTY





- Action may be taken based on **ORANGE AND RED** COLOUR warnings.
- Vulnerable regions likely urban and hilly areas action may be initiated for heavy rainfall warning.
- As the lead period increases forecast accuracy decreases.

## Flash Flood Guidance



### **24 hours Outlook for the Flash Flood Risk (FFR) till 1130 IST of 16-10-2024 :**

Low to Moderate flash flood risk likely over few watersheds & neighbourhoods of following Met Sub-divisions during next 24 hours.

**Coastal Andhra Pradesh** – Nellore and Prakasham district

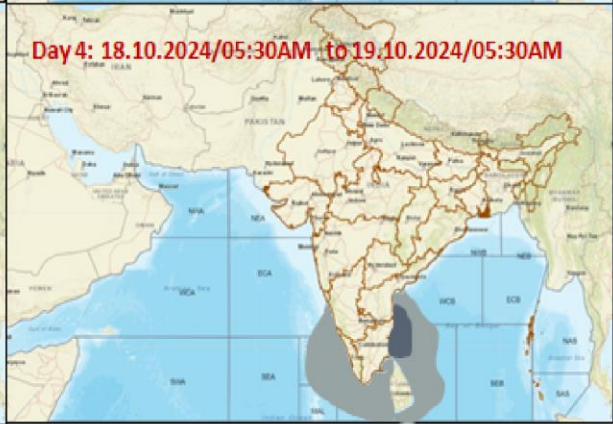
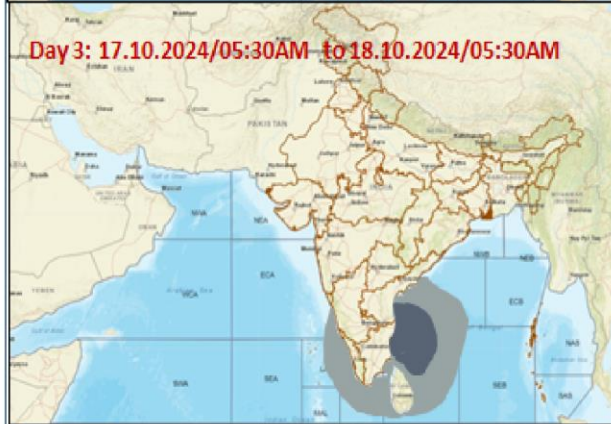
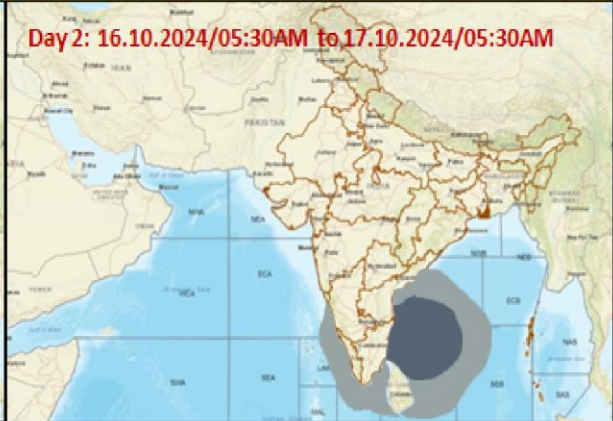
**Rayalaseema** – Kadapa and Chittoor districts

**Tamil Nadu**– Thiruvallur, Thruvanamalai, Chennai and Kanchipuram districts.

Surface runoff/ Inundation may occur at some fully saturated soils & low-lying areas over area of concern as shown in map due to expected rainfall occurrence in next 24 hours.



## Fishermen Warning Graphics



Squally Weather with wind speed 35-45 kmph gusting to 55 kmph
Squally WX with wind speed 40-50 kmph gusting to 60 kmph

**Fishermen are advised not to venture into the marked areas.**